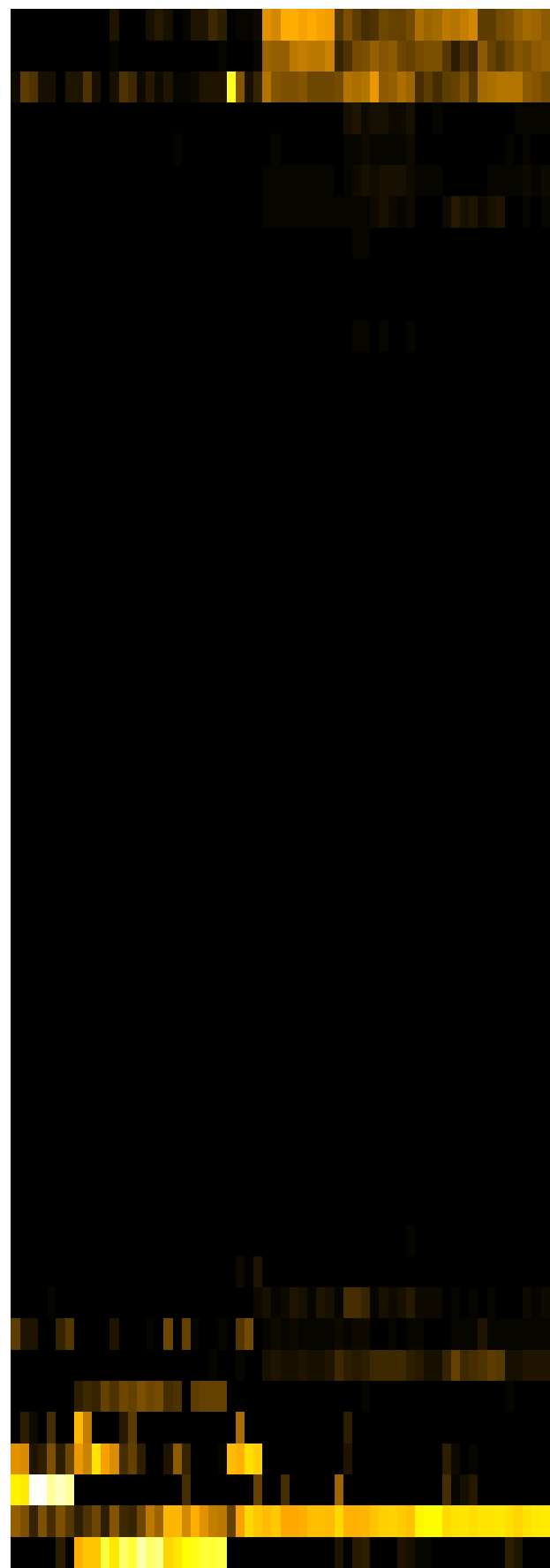
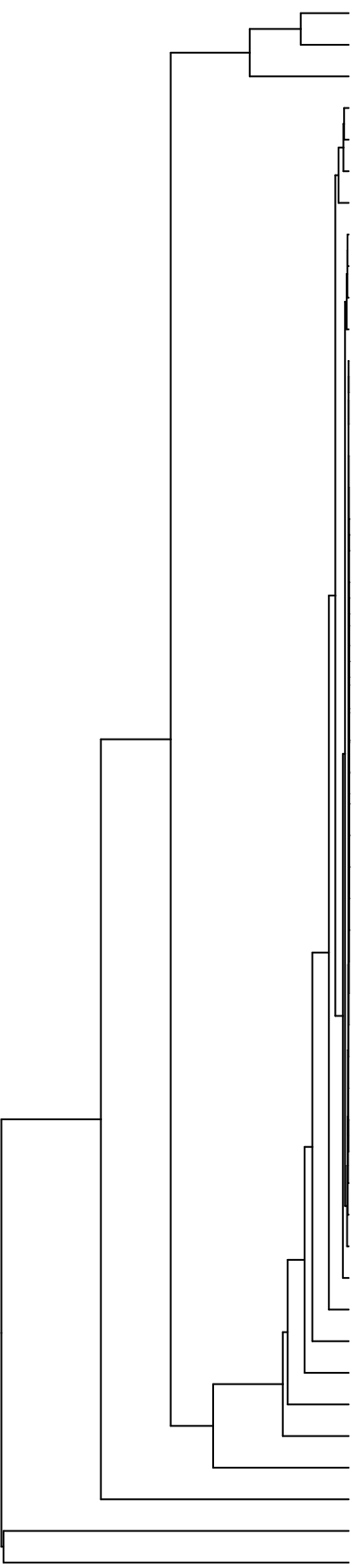


Group006  
 G Final -PMA  
 C Final -PMA



Veillonella  
 Haemophilus  
 Neisseria  
 Aggregatibacter  
 Gemella  
 Eikenella  
 Schaalia  
 Leptotrichia  
 Prevotella  
 Porphyromonas  
 Campylobacter  
 Lancefieldella  
 Lachnoanaerobaculum  
 Lautropia  
 Catonella  
 Cutibacterium  
 Serratia  
 Acidovorax  
 Capnocytophaga  
 Acinetobacter  
 Novosphingobium  
 Lachnospiraceae\_[G-2]  
 Leifsonia  
 Agrobacterium  
 Sphingobium  
 Riemerella  
 Microbacterium  
 Siccationidurans  
 Saccharibacteria\_(TM7)\_[G-5]  
 Phyllobacterium  
 Absconditabacteria\_(SR1)\_[G-1]  
 Oribacterium  
 Saccharibacteria\_(TM7)\_[G-6]  
 Saccharibacteria\_(TM7)\_[G-1]  
 Delftia  
 Solobacterium  
 Alloprevotella  
 Stomatobaculum  
 Actinomyces  
 Pseudomonas  
 Staphylococcus  
 Fusobacterium  
 Rothia  
 Granulicatella  
 Salmonella  
 Raoultella  
 Klebsiella  
 Enterobacter  
 Streptococcus  
 Citrobacter

Genus

F28914.S572  
 F28914.S569  
 F28914.S598  
 F28914.S571  
 F28914.S446  
 F28914.S443  
 F28914.S445  
 F28914.S444  
 F28914.S410  
 F28914.S441  
 F28914.S415  
 F28914.S414  
 F28914.S597  
 F28914.S575  
 F28914.S256  
 F28914.S249  
 F28914.S250  
 F28914.S255  
 F28914.S283  
 F28914.S124  
 F28914.S125  
 F28914.S127  
 F28914.S121  
 F28914.S096  
 F28914.S285  
 F28914.S287  
 F28914.S281  
 F28914.S284  
 F28914.S089  
 F28914.S093

Samples